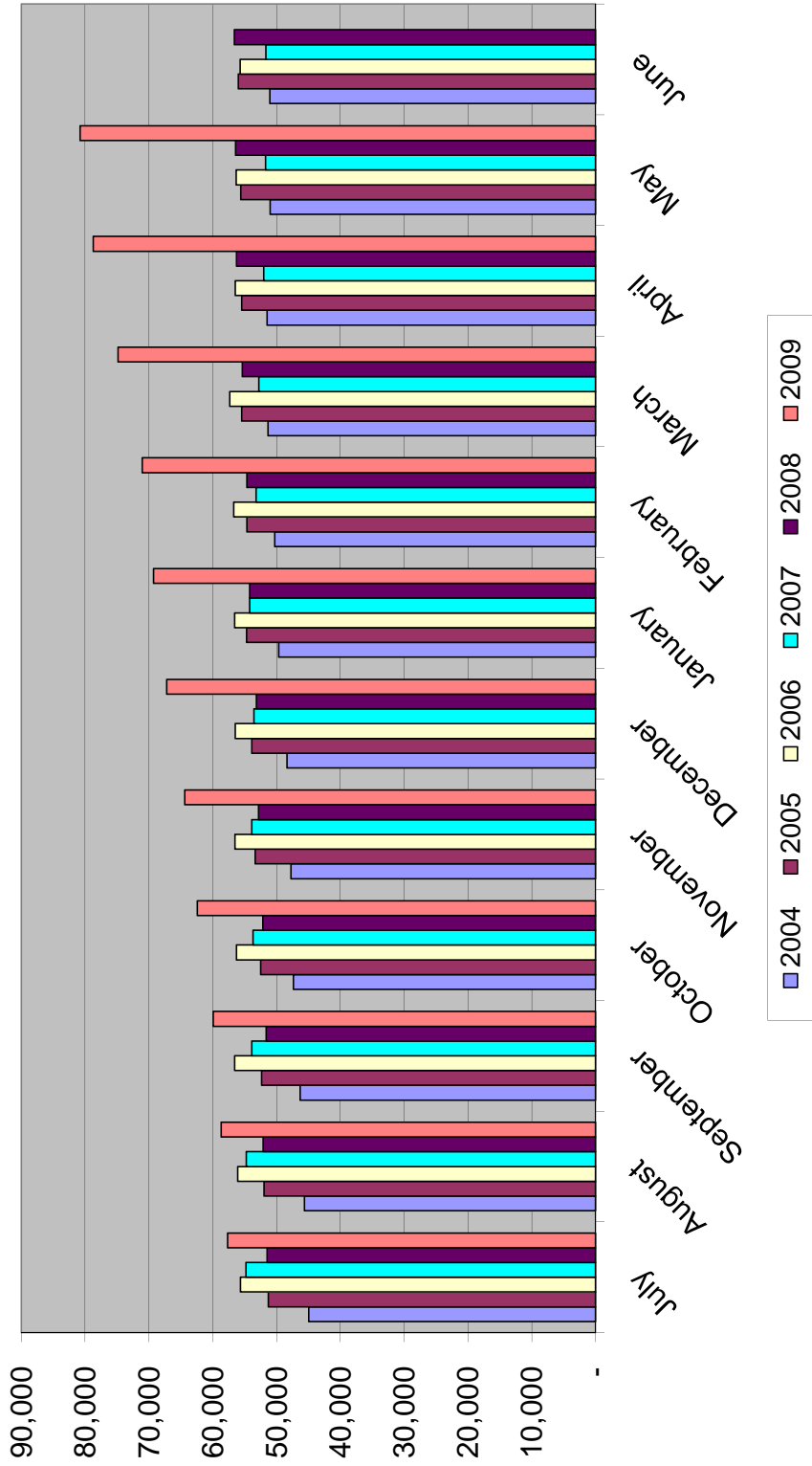


Food Stamp Caseload



Caseload Fiscal Year	July	August	September	October	November	December	January	February	March	April	May	June
2004	44,952	45,635	46,292	47,347	47,714	48,350	49,676	50,275	51,340	51,491	51,003	51,063
2005	51,292	51,936	52,328	52,500	53,348	53,899	54,673	54,626	55,441	55,480	55,587	55,969
2006	55,648	56,077	56,579	56,274	56,532	56,473	56,546	56,684	57,336	56,444	56,300	55,709
2007	54,780	54,750	53,858	53,662	53,867	53,529	54,227	53,217	52,789	52,025	51,725	51,660
2008	51,497	52,091	51,624	52,170	52,821	53,169	54,221	54,650	55,343	56,275	56,403	56,624
2009	57,642	58,695	59,920	62,413	64,374	67,204	69,260	71,060	74,826	78,716	80,770	